

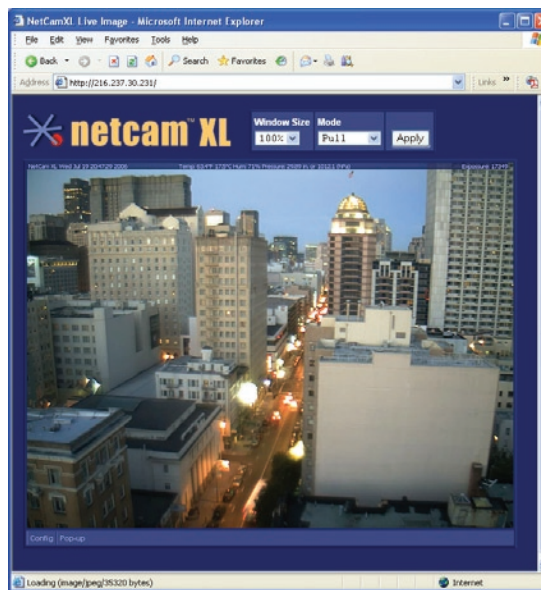


HIGH DEFINITION CAMERA + STREAMING WEB SERVER = netcam XL

Rugged Network Camera offers High Definition Resolution at Streaming Video Speeds

- Cost Effective High Definition Video Streaming and Recording
- Excellent Tool for Security, Surveillance, Employee Monitoring, Construction, Tourism, Marketing, Web Site Traffic Building
- Works with standard Auto Iris lenses and motorized zoom lenses
- IP-Addressable, Built-in Web Server, Requires No PC to Operate!
- Connects to LAN, Cable, DSL, Wireless Ethernet, Cellular, Satellite, Modem or Wireless RS-232 Connection
- Excellent Digital Image Quality, Up to 2048x1536 Resolution (3MP model)
- Streaming Video up to 225 Frames per Second (3MP model)
- View and Configure with any Graphical Web Browser, No Plug-Ins Required
- Automatically Archives on Remote Server
- Outdoor Enclosures and Wide Selection of Lenses Available
- Easy to Use, Turnkey Solution
- Compatible with StarDot DVR software and third party NVR applications

Built on StarDot's proven NetCam technology, the NetCam XL series of network cameras combines high resolution imaging with streaming video speeds, all in a rugged all-temperature package. Features include compatibility with both standard DC auto iris lenses and motorized zoom lenses, sophisticated integrated video motion detection and the ability to attach a weather station and display the current weather data on the live image.

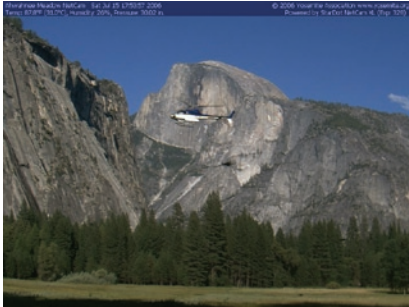


For more information, call us at **1-888-STAR DOT** (888-782-7368) or visit us at **www.stardot-tech.com**

Excellent Digital Image Quality up to 2048x1536



NOAA North Pole Installation (no heater required)

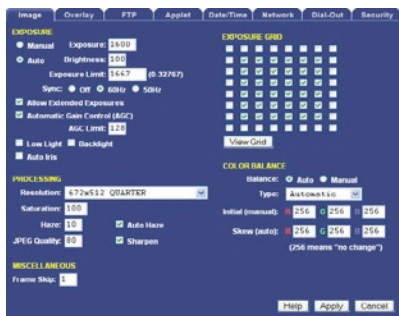


Half Dome in Yosemite National Park



Old Faithful Geyser in Yellowstone National Park

Viewing & Configuration Software and Web Server Built Into NetCam XL



www.stardot-tech.com

6820-H Orangethorpe Ave, Buena Park, CA 90620
714.228.9282 • 714.228.9283 fax • 888-STAR DOT

© Copyright 2006 StarDot Technologies, Information Subject to Change

NetCam XL Specifications

Imaging

- NetCam XL = Sharp 1/3" CCD sensor, 640x480 RGB, Frame Transfer, 30 FPS
- NetCam XL 1.3 MP = Sony 1/2" CCD sensor, 1344x1024 RGB, Frame Transfer, 5 FPS
- NetCam XL 3 MP = Micron 1/2" CMOS sensor, 2048x1536 RGB, Frame Transfer, 225 FPS
- Exposure range: 1/100,000 second - 1.3 seconds
- Auto/manual exposure, auto/manual color balance, sharpening, auto/manual haze
- Contrast enhancement, gamma correction
- Customizable date/time/text overlay
- Image format: JPEG, adjustable quality / filesize
- Lens: 8mm C-Mount with manual iris and focus rings
- Lens Mount: Industry standard CS-Mount, includes C-Mount adapter

Operating System / CPU

- uClinux operating system
- Motorola Coldfire CPU
- Built-in web server, telnet server and FTP client
- Supported protocols: TCP/IP, HTTP, FTP, ARP, Telnet, Daytime, X/Y/Zmodem
- 32MB DRAM, 4MB Flash Memory
- Security: Password-protected user accounts for viewing and configuring NetCam XL

Connectivity

- 1 x 10/100-baseT Ethernet, RJ-45
- 1 x DC Auto Iris Connector
- 1 x Motorized Zoom Lens Connector
- 2 x RS-232 Serial Ports, DB9 Male, up to 115.2Kb
- 4 x digital alarm inputs or 4 x 5V swing output pins
- 1 x fully isolated relay rated at 28VDC 2A or 125VDC 0.5A

Physical

- Dimensions: 3.25" W (82.5mm) x 2.20" H (55.9mm) x 6.56" L (166.6mm)
- Included lens adds 1.1" (27.9mm) to length, Included (removable) 1/4" tripod mount adds 0.4" (10.1mm) to height
- Weight: 19.5 ounces (553 grams)
- Case: Aluminum clam shell body, argentan alloy front cover
- Mounting: Universal 1/4" tripod mount, top or bottom of camera
- Operating temperature range: -40° - +120° F (-40° - +48° C)
- Power Requirements: 8VDC-15VDC, 500mA @ 12V, 12VDC power supply included
- EMI Approval: FCC, Class A



Two Serial Ports - Connect NetCam XL to analog or wireless modem, or accessories like weather station & automation controller

Power Jack - Includes single cable for both power and data -- great for rooftop, ceiling and remote installations

Aux and I/O Ports - Connect to alarm system and motorized zoom lens

Built-in 10/100 Ethernet Port
- Plug NetCam directly to LAN, Cable Modem or DSL network

Contents Include:

- NetCam XL Camera with Integrated Web Server
- 8mm C-Mount Lens with Manual Iris/Focus
- 50 ft. Combination Power/Network Cable
- Power Supply (12VDC, 1A)
- Indoor Wall Mount
- Dial-Out Package Includes External Modem
- Easy-to-Use *StarDot Tools* Setup Software